

**ITEM 85. PARKING - CHIPPENDALE PARKING CHANGES - DANIELS
STREET CHIPPENDALE**

TRIM RECORD NO: 2015/035573

RECOMMENDATION

It is recommended that the Committee endorse the allocation of parking on the southern side of Daniels Street, Chippendale between the points 10.8 metres and 24.8 metres (12 motorbike spaces) east of Shepherd Street as "Motor Bikes Only, Mon- Fri".

DECISION

BACKGROUND

On 12 May 2014, Council resolved to "...review the adequacy of existing parking controls in Chippendale to ensure they balance the needs of residents, visitors and local business in light of changing land uses".

The type and intensity of land use in and near Chippendale is undergoing major change. New housing, education, retail and commercial projects have been completed or are under construction. Within the existing built fabric, new galleries, offices, restaurants and cultural facilities have been established. These changes inevitably increase competition for limited street parking spaces used by residents, visitors, customers and business.

In August 2014, the City wrote to more than 3,400 proprietors in Chippendale seeking feedback on a proposal to extend timed parking to 10pm seven days a week in the area bounded by Cleveland Street, Regent Street, City Road and Broadway.

Timed permit parking in the area east of Abercrombie Street is currently 2P Ticket 8am-6pm seven days a week with an exemption for permit holders.

West of Abercrombie Street, it was proposed to introduce two hour (2P) restrictions without a permit exemption, into a number of currently unrestricted streets.

Following assessment of feedback, it is recommended that the proposal be modified to not proceed with proposed restrictions in currently unrestricted streets west of Abercrombie Street, to introduce off-peak parking restrictions favouring permit holders after loading zone hours expire (evenings and weekends), and to formalise an area for motorcycle parking.

The modified proposal was subsequently adopted by Council at its meeting on 8 December 2014 subject to endorsement by the Local Pedestrian, Cycling and Traffic Calming Committee. Council resolved the following:

- (A) extension of parking restrictions east of Abercrombie Street to 2P Ticket, 8am-10pm, seven days, and that exemptions for permit holders be maintained where they currently exist;
- (B) introduction of additional permit holder exemptions on the northern kerb of Queen Street between points 10 and 20 metres west of Regent Street, and between points 10 and 25 metres west of Balfour Street on the northern kerb of Little Queen Street;

- (C) introduction of timed weekend and/or evening parking restrictions to kerb space currently signposted as Loading Zone; and
- (D) establishment of a weekday motorcycle-only parking zone on Daniels Street.

COMMENTS

The kerb space on the southern side of Daniels Street, Chippendale between Shepherd Street and Moorgate Lane is currently unrestricted for parking.

This kerb space is will be changed to “Motor Bikes Only, Mon- Fri” in accordance with the Resolution of Council from 8 December 2014.

CONSULTATION

The City consulted local residents and business in the area. There were over 3,400 letters sent out with 107 submissions received.

FINANCIAL

Funds are available in the current budget.

ATTACHMENTS

Parking - Chippendale Parking Changes - Daniels Street Chippendale

Michael Rimac, Engineering Traffic Officer

ROSE STREET

SHEPHERD STREET

**Proposed
Motor Bikes Only
Mon-Fri
(12 motorbike spaces)**

*Existing
Unrestricted Parking*

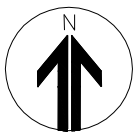
DANIELS STREET

0.0m

10.8m

24.8m

MOORGATE LANE



PROPOSAL

DANIELS STREET, CHIPPENDALE
CHIPPENDALE PARKING REVIEW



